



Model 860XL & 860XLFT

Resilient Seated Ball Type Test Cocks

Application

Designed for installation on backflow preventers as a test port for attaching a differential pressure gauge. Optional SAE flare fitting allows for fast and easy attachment of test kit hoses. A threaded dust cover is included with the 860XLFT to protect against fouling caused by insects, dirt and debris.

Standards Compliance

- Certified to NSF/ANSI 372* by IAPMO R&T
- *(0.25% MAX. WEIGHTED AVERAGE LEAD CONTENT)

Materials

Main valve body Low Lead Cast Bronze ASTM B 584
Ball Low Lead Brass, Chrome Plated
Seat & packing Teflon
Flare fitting Brass ASTM B 16

Features

Sizes: 1/8", 1/4"

Maximum pressure 300 PSI WOG
Maximum temperature 180°F
End connections Threaded ANSI B1.20.1
Flare connection (860FT) 45° Flare SAE



LEAD FREE



Model 860XL

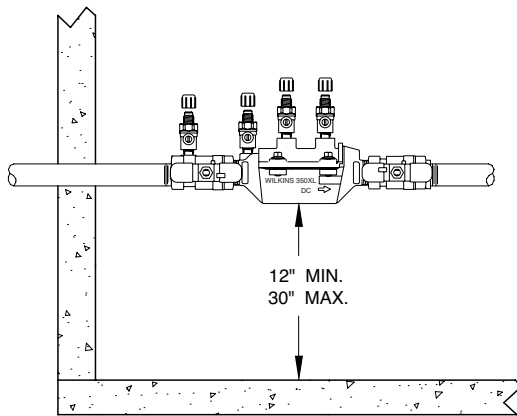


Model 860XLFT

Accessories:

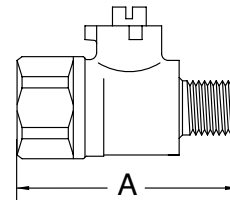
- ☐ Test Cock 4-Pack Kit (Model RK18-860XL, RK14-860XL)
- ☐ FT Test Cock 4-Pack Kit (Model RK18-860XLFT, RK14-860XLFT)

Typical Installation

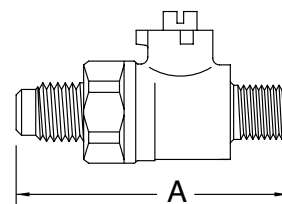
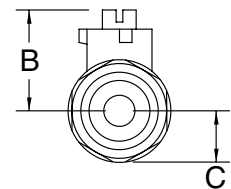


DIRECTION OF FLOW ➡

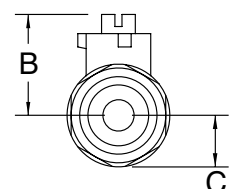
Indoor Installation (350XL)



MODEL 860XL



MODEL 860XLFT



Dimensions & Weights (do not include pkg.)

MODEL	SIZE	DIMENSIONS (approximate)						WEIGHT	
		A		B		C		lbs.	kg
		in	mm	in.	mm	in.	mm		
18-860XL	1/8" MNPT X 1/4" FNPT	1 5/8	41	3/4	19	3/8	10	1	0.5
14-860XL	1/4" MNPT X 1/4" FNPT	1 5/8	41	3/4	19	3/8	10	1	0.5
18-860XLFT	1/8" MNPT X 45° SAE	2	51	3/4	19	3/8	10	1	0.5
14-860XLFT	1/4" MNPT X 45° SAE	2	51	3/4	19	3/8	10	1	0.5