

Series 919, LF919

Reduced Pressure Zone Assemblies

Sizes 1/4" – 2"

Repair Kits

When ordering specify Ordering Code, Kit No., and Valve Size.

ORDERING CODE	KIT NO.	SIZE
Total Repair Kits		
0888167	RK 919-T	1/4" - 1/2"
0888168	RK 919-T	3/4"
0888169	RK 919-T	1"
0888170	RK 919-T	1 1/4" - 1 1/2"
0888171	RK 919-T	2"

Kit consists of: relief valve repair kit, first check repair kit, second check repair kit

Relief Valve Kits

ORDERING CODE	KIT NO.	SIZE
Total Relief Valve Kits		
0888130	RK 919 VT	1/4" – 1/2"
0888131	RK 919 VT	3/4" – 1"
0888132	RK 919 VT	1 1/4" – 2"

Kit consists of: relief valve assembly, RV spring, and RV cover O-ring.

Relief Valve Rubber Parts Kits

ORDERING CODE	KIT NO.	SIZE
0888135	RK 919 RV	1/4" – 1/2"
0888136	RK 919 RV	3/4" – 1"
0888137	RK 919 RV	1 1/4" – 2"

Kit consists of: relief valve disc, RV diaphragm, RV seat O-ring and cover O-ring

Relief Valve Seat Kits

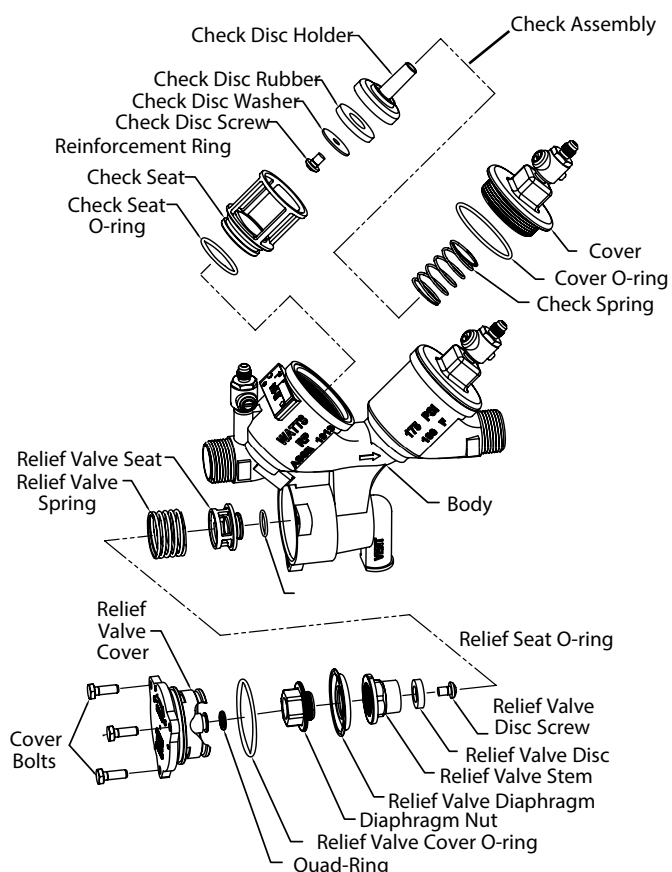
ORDERING CODE	KIT NO.	SIZE
0888150	RK 919 SV	1/4" – 1/2"
0888151	RK 919 SV	3/4" – 1"
0888153	RK 919 SV	1 1/4" – 2"

Kit consists of: relief valve seat, RV seat O-ring and RV cover O-ring

Relief Valve Cover Kits

ORDERING CODE	KIT NO.	SIZE
0888164	LFRK 919 VC	1/4" – 1/2"
0794142	LFRK 919 VC	3/4" – 1"
0794143	LFRK 919 VC	1 1/4" – 2"

Kit consists of: relief valve cover and cover O-ring



*The wetted surface of this product contacted by consumable water contains less than 0.25% of lead by weight.

Series 919, LF919

Reduced Pressure Zone Assemblies

Sizes 1/4" – 2"

Check valve kits

When ordering specify Ordering Code, Kit No., and Valve Size.

ORDERING CODE	KIT NO.	SIZE
1st Check Kits		
0888110	RK 919 CK1	1/4" – 1/2"
0888111	RK 919 CK1	3/4"
0888112	RK 919 CK1	1"
0888113	RK 919 CK1	1 1/4" – 1 1/2"
0888114	RK 919 CK1	2"

Kit consists of: check assembly, spring and cover O-ring

2nd Check Kits

ORDERING CODE	KIT NO.	SIZE
0888115	RK 919 CK2	1/4" – 1/2"
0888116	RK 919 CK2	3/4"
0888117	RK 919 CK2	1"
0888118	RK 919 CK2	1 1/4" – 1 1/2"
0888119	RK 919 CK2	2"

Kit consists of: check assembly, spring and cover O-ring

1st or 2nd Check Rubber Parts Kits

ORDERING CODE	KIT NO.	SIZE
0888120	RK 919 RC4	1/4" – 1/2"
0888121	RK 919 RC4	3/4"
0888122	RK 919 RC4	1"
0888123	RK 919 RC4	1 1/4" – 1 1/2"
0888124	RK 919 RC4	2"

Kit consists of: disc, seat O-ring and cover O-ring

Check Seat Kits

ORDERING CODE	KIT NO.	SIZE
0888125	RK 919 S	1/4" – 1/2"
0888126	RK 919 S	3/4"
0888127	RK 919 S	1"
0888128	RK 919 S	1 1/4" – 1 1/2"
0888129	RK 919 S	2"

Kit consists of: seat, seat O-ring and cover O-ring

Complete Valve Rubber Parts Kits

ORDERING CODE	KIT NO.	SIZE
0888140	RK 919 RT	1/4" – 1/2"
0888141	RK 919 RT	3/4"
0888142	RK 919 RT	1"
0888143	RK 919 RT	1 1/4" – 1 1/2"
0888144	RK 919 RT	2"

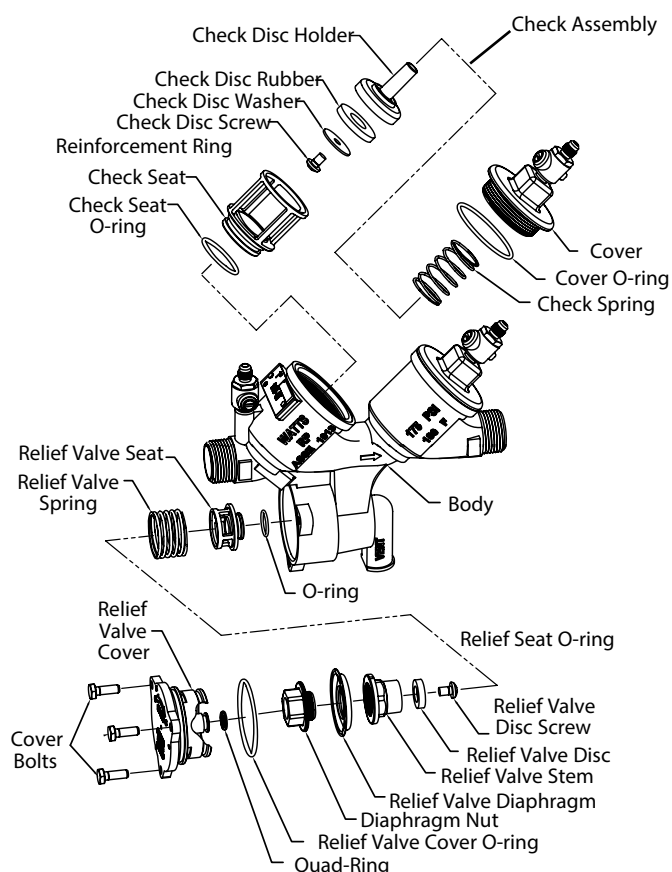
Kit consists of: 2 check seat O-rings, 2 check cover O-rings, relief valve O-ring, relief valve cover O-ring, relief valve stem O-ring

Check Cover Kits»

ORDERING CODE	KIT NO.	SIZE
0794144	LFRK 919 C	1/4" – 1/2"
0794145	LFRK 919 C	3/4"
0794146	LFRK 919 C	1"
0794147	LFRK 919 C	1 1/4" – 1 1/2"
0794148	LFRK 919 C	2"

Kit consists of: cover and cover O-ring

For 1/2" and 3/4" 919R10 models use 1" repair kits.



*The wetted surface of this product contacted by consumable water contains less than 0.25% of lead by weight.

