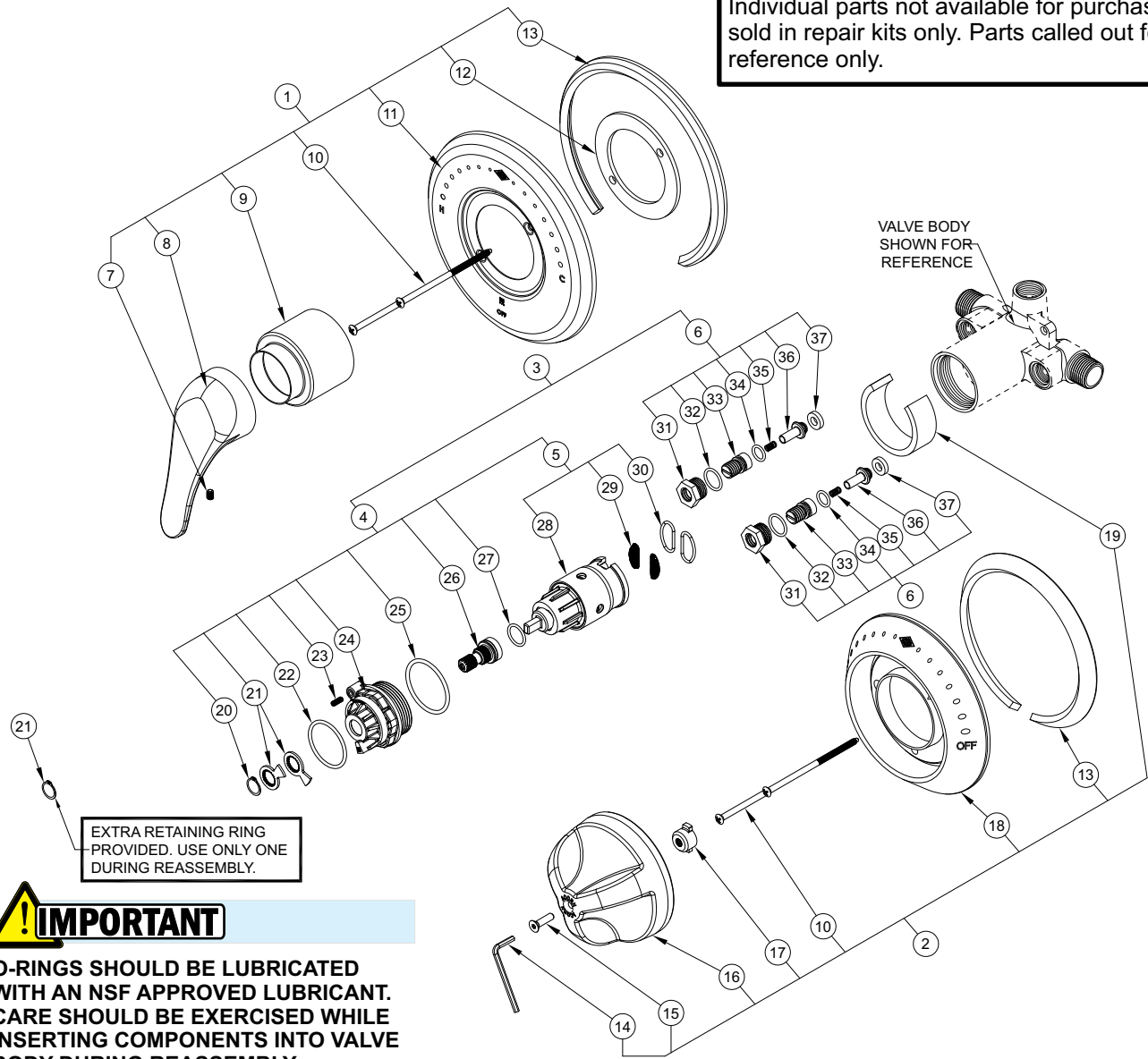


REPAIR PARTS:

NOTE:
Individual parts not available for purchase, sold in repair kits only. Parts called out for reference only.



! IMPORTANT

O-RINGS SHOULD BE LUBRICATED WITH AN NSF APPROVED LUBRICANT. CARE SHOULD BE EXERCISED WHILE INSERTING COMPONENTS INTO VALVE BODY DURING REASSEMBLY.

ITEM	KIT NUMBER	DESCRIPTION	ITEM	KIT NUMBER	DESCRIPTION
1	7800-503-001	TRIM REPLACEMENT, LEVER HANDLE	4	7800-502-001	CARTRIDGE & BONNET REPLACEMENT
2	7800-186-001	TRIM REPLACEMENT, LIGATURE RESISTANT	5	7800-175-001	CARTRIDGE REPLACEMENT
3	7800-500-001	COMPLETE REBUILD KIT	6	7800-504-001	CHECK-STOP REBUILD KIT
ITEM	DESCRIPTION	ITEM	DESCRIPTION	ITEM	DESCRIPTION
7	CUP POINT SET SCREW	18	LIGATURE RESISTANT ESCUTCHEON	29	STAINLESS STEEL SCREENS (x2)
8	LEVER HANDLE	19	SLEEVE GASKET (SV16 ONLY)	30	CARTRIDGE SCREEN O-RINGS (x2)
9	VALVE SLEEVE	20	RETAINING RING (x2)	31	CHECK CAP (x2)
10	OVAL HEAD SCREWS (x2)	21	TEMPERATURE STOP RINGS (x2)	32	CHECK CAP O-RING (x2)
11	ESCUTCHEON, LEVER HANDLE	22	EXTERNAL BONNET O-RING	33	CHECK ADJUST SCREW (x2)
12	TRIM PLATE CENTER GASKET	23	SET SCREW	34	CHECK ADJUST SCREW O-RING (x2)
13	ESCUTCHEON GASKET	24	VALVE BONNET	35	CHECK SPRING (x2)
14	5/32" CENTER REJECT ALLEN WRENCH	25	BONNET O-RING	36	CHECK PLUNGER (x2)
15	LIGATURE RESISTANT HANDLE SCREW	26	VALVE STEM	37	CHECK SEAL (x2)
16	LIGATURE RESISTANT HANDLE	27	VALVE STEM O-RING	38	
17	STEM INSERT	28	CARTRIDGE		