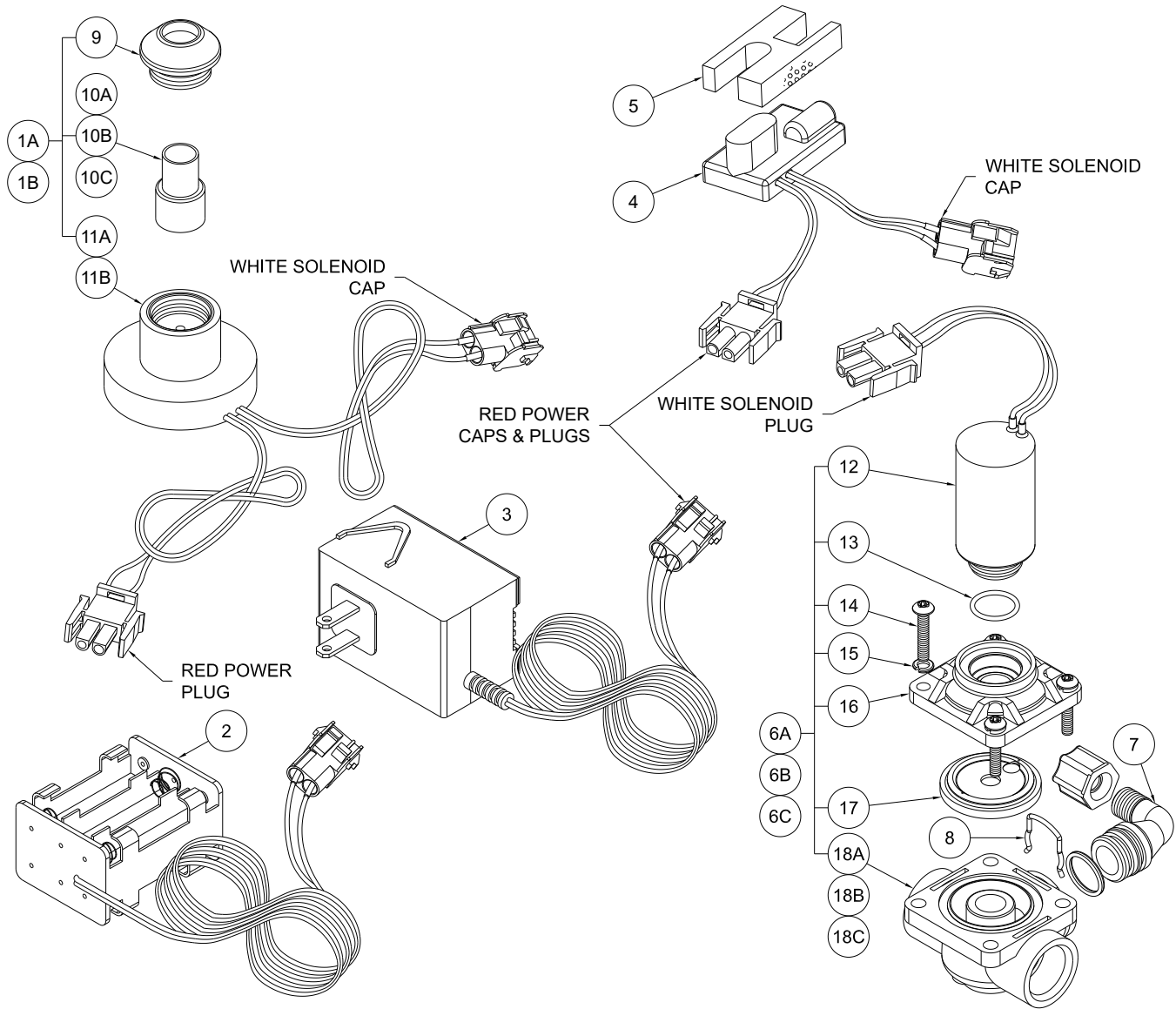




ELECTRONIC PUSHBUTTON INSTALL INSTRUCTIONS

9955-019-001



1A	2566-370-001	15 SEC ELECT PUSHBUTTON ASSY	10B	2566-026-000	PUSHBUTTON - "H"
1B	2566-373-001	60 SEC ELECT PUSHBUTTON ASSY	10C	2566-027-000	PUSHBUTTON - "C"
2	0710-357-001	AA SIX PACK BATTERY BOX ASSY	11A	2566-370-002	15 SEC ELECT PUSHBUTTON w/CONN
3	0711-410-001	9VDC PLUG-IN TRANSFORMER ASSY	11B	2566-373-002	60 SEC ELECT PUSHBUTTON w/CONN
4	2562-373-001	9VDC ELECTRONIC EYE SENSOR ASSY	12	2563-326-001	9VDC SOLENOID ASSEMBLY
5	6212-101-199	SENSOR EYE SPACER	13	0401-015-000	O-RING
6A	2570-132-001	P VALVE ASSY w/9VDC SOLENOID -LH	14	6502-043-000	#8-32 x 1/2" LONG PHIL RD HEAD
6B	2570-131-001	P VALVE ASSY w/9VDC SOLENOID -RH	15	0331-003-000	#8 LOCKWASHER
6C	2570-130-001	P VALVE ASSY w/9VDC SOLENOID -MA	16	2570-061-000	PLASTIC SOLENOID BONNET
7	2570-051-001	1/4" OD PLASTIC ELBOW ASSEMBLY	17	2563-010-001	WATER DIAPHRAGM ASSEMBLY
8	0326-100-000	RETAINING CLIP- PLASTIC	18A	2570-027-000	PLASTIC VALVE BODY -LH
9	2566-020-199	PUSHBUTTON ESCUTCHEON	18B	2570-026-000	PLASTIC VALVE BODY -RH
10A	2566-025-000	PUSHBUTTON - BLANK	18C	2570-025-000	PLASTIC VALVE BODY -MA
ITEM	PART NUMBER	DESCRIPTION	ITEM	PART NUMBER	DESCRIPTION