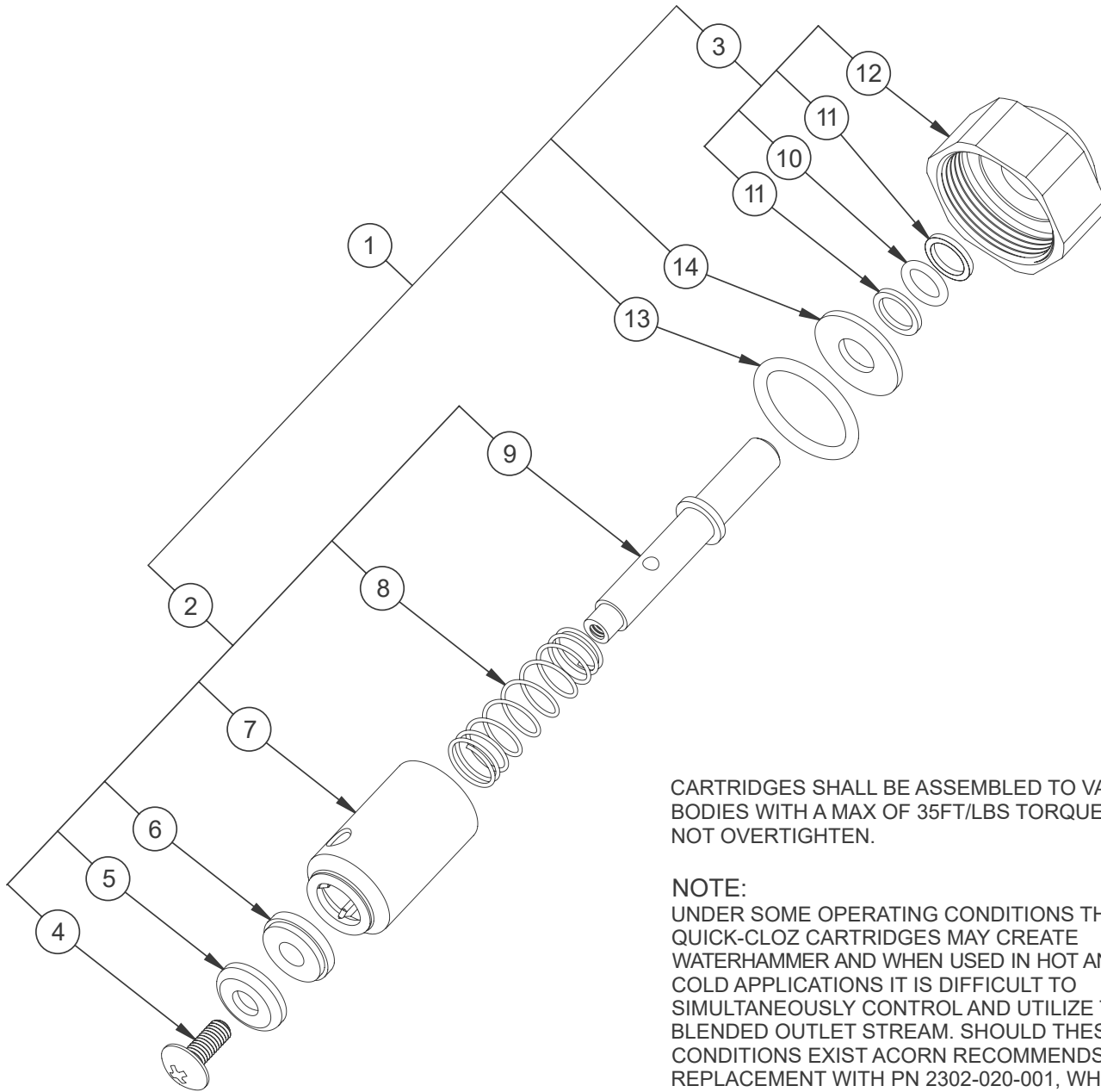




QUICK-CLOZ VALVE CARTRIDGE FOR PENAL-TROL VALVE

9955-200-001



CARTRIDGES SHALL BE ASSEMBLED TO VALVE BODIES WITH A MAX OF 35FT/LBS TORQUE. DO NOT OVERTIGHTEN.

NOTE:
 UNDER SOME OPERATING CONDITIONS THESE QUICK-CLOZ CARTRIDGES MAY CREATE WATERHAMMER AND WHEN USED IN HOT AND COLD APPLICATIONS IT IS DIFFICULT TO SIMULTANEOUSLY CONTROL AND UTILIZE THE BLENDED OUTLET STREAM. SHOULD THESE CONDITIONS EXIST ACORN RECOMMENDS REPLACEMENT WITH PN 2302-020-001, WHICH ELIMINATES WATERHAMMER AND METERS, AS SET, UP TO ONE MINUTE.

1	2304-000-001	CARTRIDGE ASSY -COMPLETE	8	1380-004-000	SPRING
2	2304-001-001	CARTRIDGE ASSY -LESS BONNET	9	2304-001-199	ROD
3	2305-010-001	BONNET ASSY	10	0401-011-000	O-RING
4	0116-010-000	#10-32 x 1/2" PHIL	11	0409-011-000	BACK-UP RING
5	2260-009-199	DISK RETAINER	12	2305-010-199	BONNET
6	0439-002-000	GASKET DISK	13	0401-117-000	O-RING
7	2305-014-000	SLEEVE & SEAT	14	2305-013-000	RETAINER
ITEM	PART NUMBER	DESCRIPTION	ITEM	PART NUMBER	DESCRIPTION