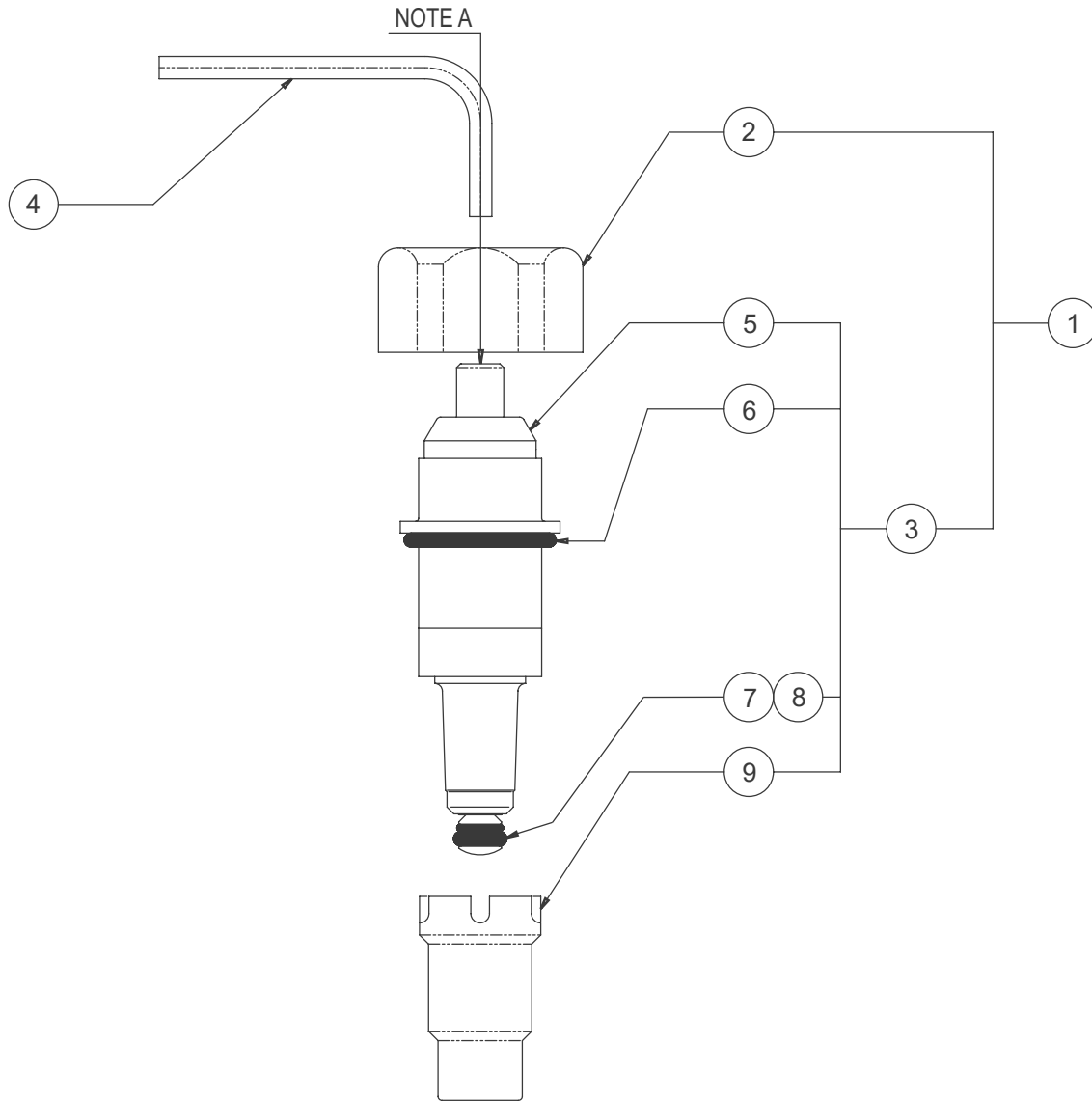




**“PENAL-MATIC” (-M FLUID METERING) CARTRIDGE FOR PENAL-TROL VALVES**

9955-300-003



**NOTE A**

A- Timing is adjustable from 5 to 60 seconds and is accomplished by inserting hex wrench, item #4 into the hole in the stem. Turning the needle clockwise increases timing, counterclockwise decreases timing. Do not attempt to remove the timing needle -to do so will void the warranty.

Changes in water pressure and/or temperature will affect timing and may require readjustment.  
 B- Bonnet, Item #2, shall be assembled to valve body with a max of 35 ft/lbs. Do not overtighten.

1	2302-020-001	CARTRIDGE ASSY w/BONNET	6	0401-117-000	O-RING
2	2309-023-199	BONNET	7	0403-104-000	O-RING
3	2302-000-001	CARTRIDGE ASSEMBLY	8	0401-006-000	O-RING
4	0298-003-000	3/32" ALLEN WRENCH	9	2302-005-000	SEAT (5/16" CLOSURE)
5	2302-003-002	BODY ASSEMBLY			
ITEM	PART NUMBER	DESCRIPTION	ITEM	PART NUMBER	DESCRIPTION