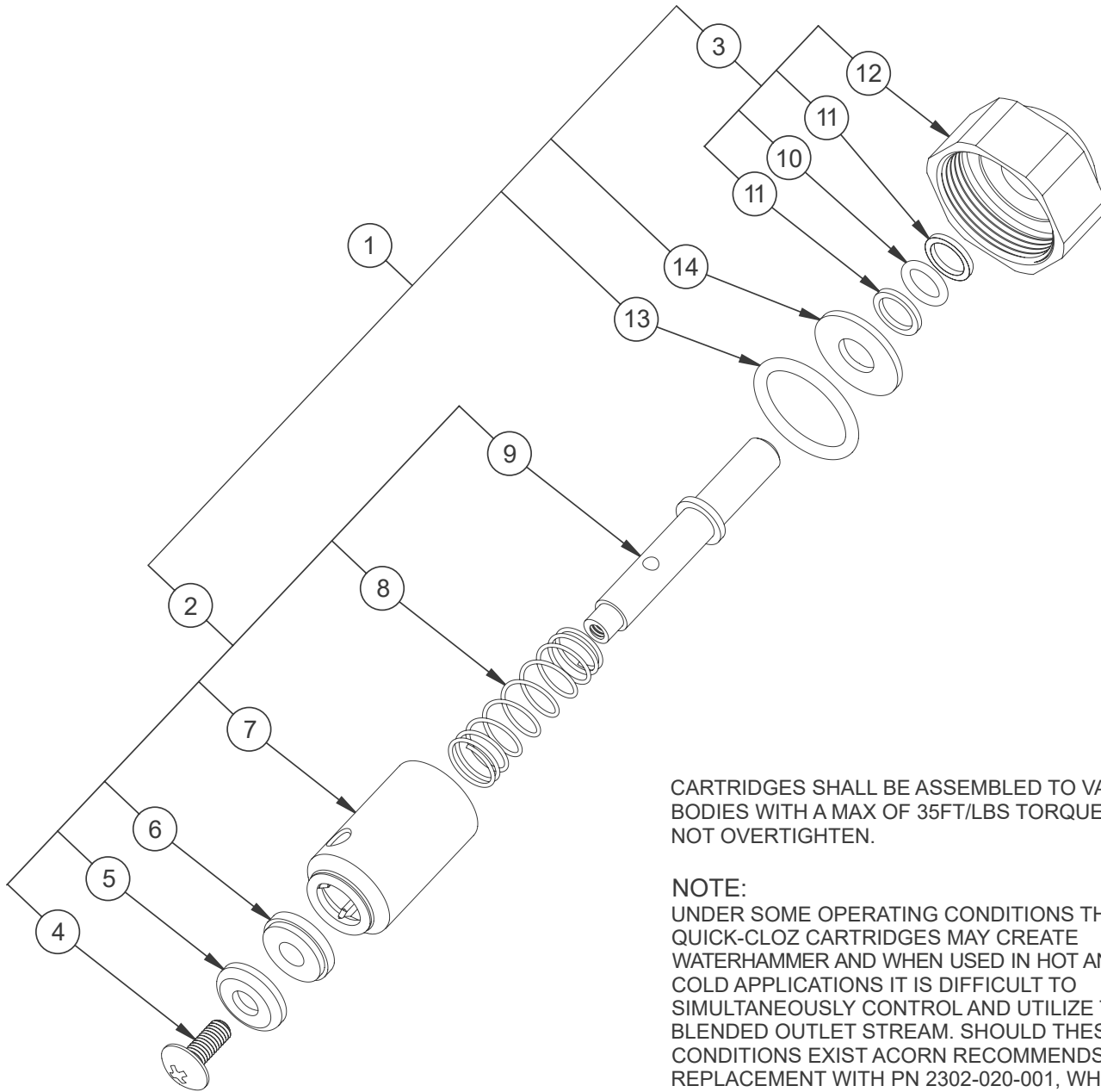




QUICK-CLOZ VALVE CARTRIDGE FOR PENAL-TROL VALVE

9955-200-001



CARTRIDGES SHALL BE ASSEMBLED TO VALVE BODIES WITH A MAX OF 35FT/LBS TORQUE. DO NOT OVERTIGHTEN.

NOTE:
 UNDER SOME OPERATING CONDITIONS THESE QUICK-CLOZ CARTRIDGES MAY CREATE WATERHAMMER AND WHEN USED IN HOT AND COLD APPLICATIONS IT IS DIFFICULT TO SIMULTANEOUSLY CONTROL AND UTILIZE THE BLENDED OUTLET STREAM. SHOULD THESE CONDITIONS EXIST ACORN RECOMMENDS REPLACEMENT WITH PN 2302-020-001, WHICH ELIMINATES WATERHAMMER AND METERS, AS SET, UP TO ONE MINUTE.

| | | | | | |
|------|--------------|-----------------------------|------|--------------|--------------|
| 1 | 2304-000-001 | CARTRIDGE ASSY -COMPLETE | 8 | 1380-004-000 | SPRING |
| 2 | 2304-001-001 | CARTRIDGE ASSY -LESS BONNET | 9 | 2304-001-199 | ROD |
| 3 | 2305-010-001 | BONNET ASSY | 10 | 0401-011-000 | O-RING |
| 4 | 0116-010-000 | #10-32 x 1/2" PHIL | 11 | 0409-011-000 | BACK-UP RING |
| 5 | 2260-009-199 | DISK RETAINER | 12 | 2305-010-199 | BONNET |
| 6 | 0439-002-000 | GASKET DISK | 13 | 0401-117-000 | O-RING |
| 7 | 2305-014-000 | SLEEVE & SEAT | 14 | 2305-013-000 | RETAINER |
| ITEM | PART NUMBER | DESCRIPTION | ITEM | PART NUMBER | DESCRIPTION |