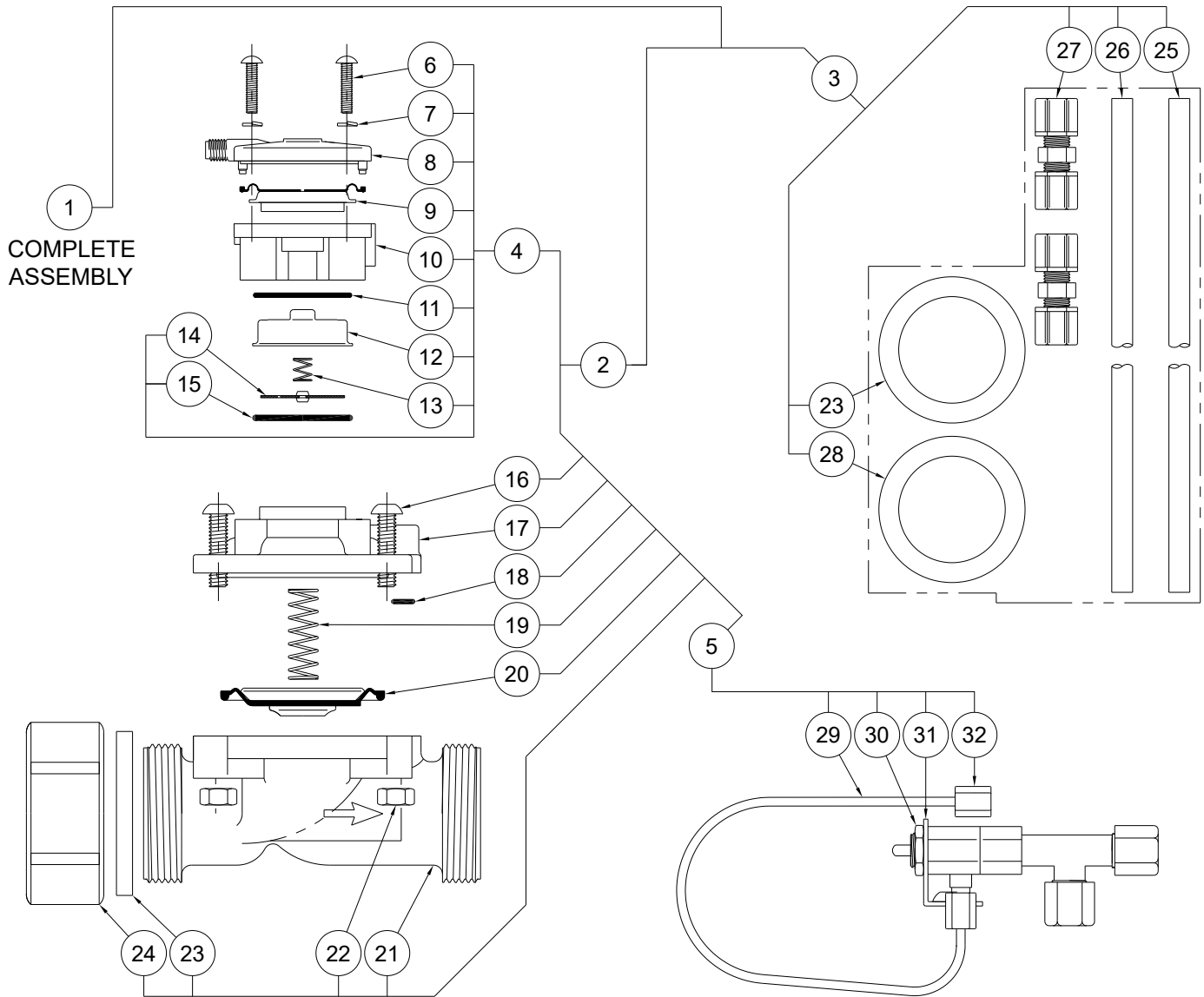




# FLOOD-TROL (FT) VALVE ASSEMBLY

9905-010-002



1	2563-080-001	VALVE ASSEMBLY- COMPLETE	17	2563-081-001	BONNET ASSEMBLY
2	2563-080-002	VALVE ASSEMBLY LESS TUBING	18	0401-007-000	O-RING
3	2563-140-001	RESET SWITCH INTERCONNECT ASSY	19	2563-108-000	SPRING
4	2563-100-002	UPPER VALVE BODY ASSEMBLY	20	2563-103-001	DIAPHRAGM ASSEMBLY
5	2563-130-002	RESET VALVE ASSEMBLY	21	2563-080-000	FLOOD-TROL BODY
6	0116-012-000	#8-32 x 1-1/4" PHILLIPS HEAD SCREW	22	0302-005-000	1/4"-20 STAINLESS STEEL NUT
7	0331-003-000	#8 LOCKWASHER	23	2563-086-000	SEALING GASKET
8	2563-114-000	COVER PLATE	24	2563-085-000	L/R HAND FLOOD-TROL NUT
9	2563-121-001	DIAPHRAGM ASSEMBLY	25	2160-007-199	1/4" OD x 7' LOW DENSITY PE (CLEAR)
10	2563-001-000	MOTOR HOUSING	26	2160-003-199	1/4" OD x 3 FT TUBING
11	0401-026-000	O-RING	27	1895-102-001	1/4" UNION CONN w/ GRIPPER ASSY
12	2563-002-199	SEPARATOR CUP	28	0411-022-000	FLOOD-TROL GASKET
13	2563-008-000	PILOT ORIFICE PLATE SPRING	29	2150-001-199	1/8" OD x 12" LOW DENSITY PE TUBE
14	2563-019-001	PILOT ORIFICE PLATE ASSEMBLY	30	2563-132-199	LOCKNUT
15	0401-124-000	O-RING	31	2563-145-001	MOUNTING BRACKET ASSEMBLY
16	0116-106-000	1/4"-20 x 1" RND HD PHIL SS SCREW	32	1895-450-000	1/8" COMPRESSION NUT
ITEM	PART NUMBER	DESCRIPTION	ITEM	PART NUMBER	DESCRIPTION