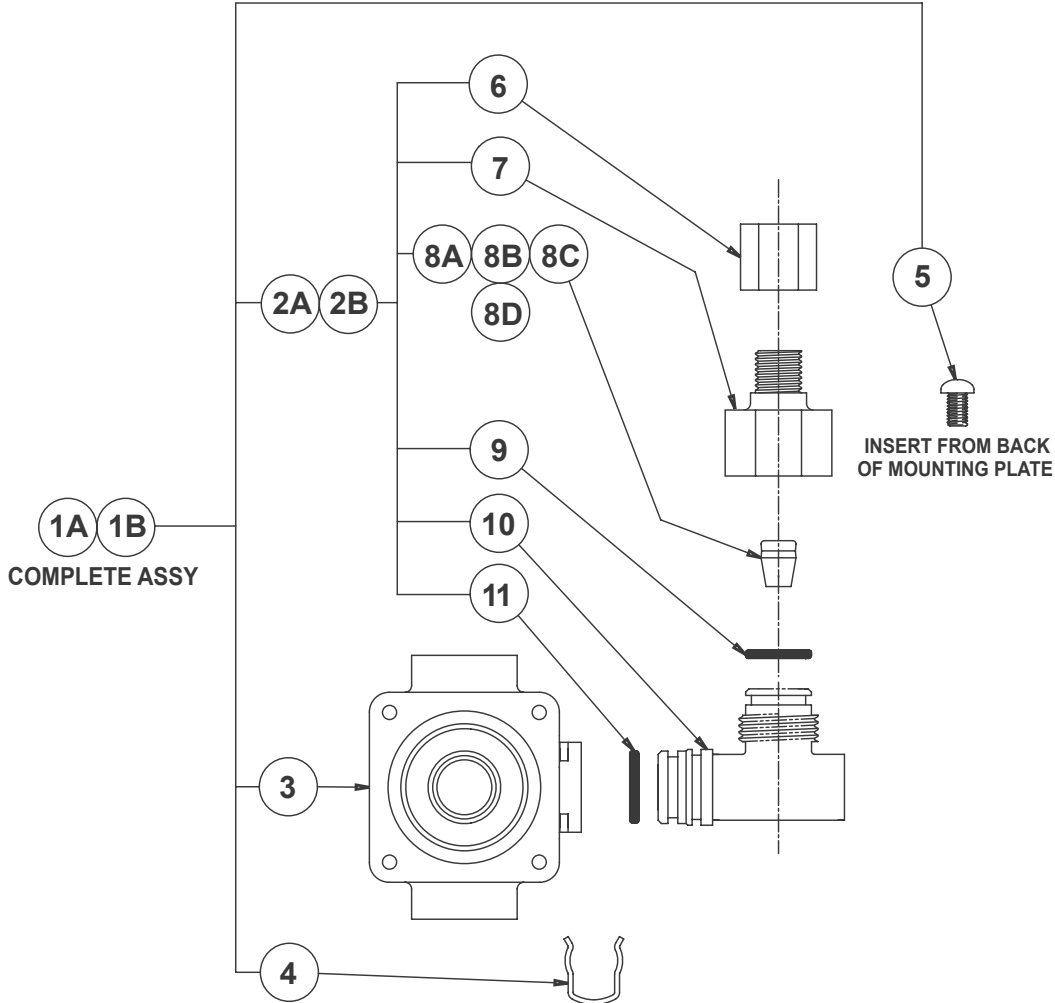




# SINGLE TEMP AIR-CONTROL VALVE BODY ASSEMBLY (-3)

9955-006-003

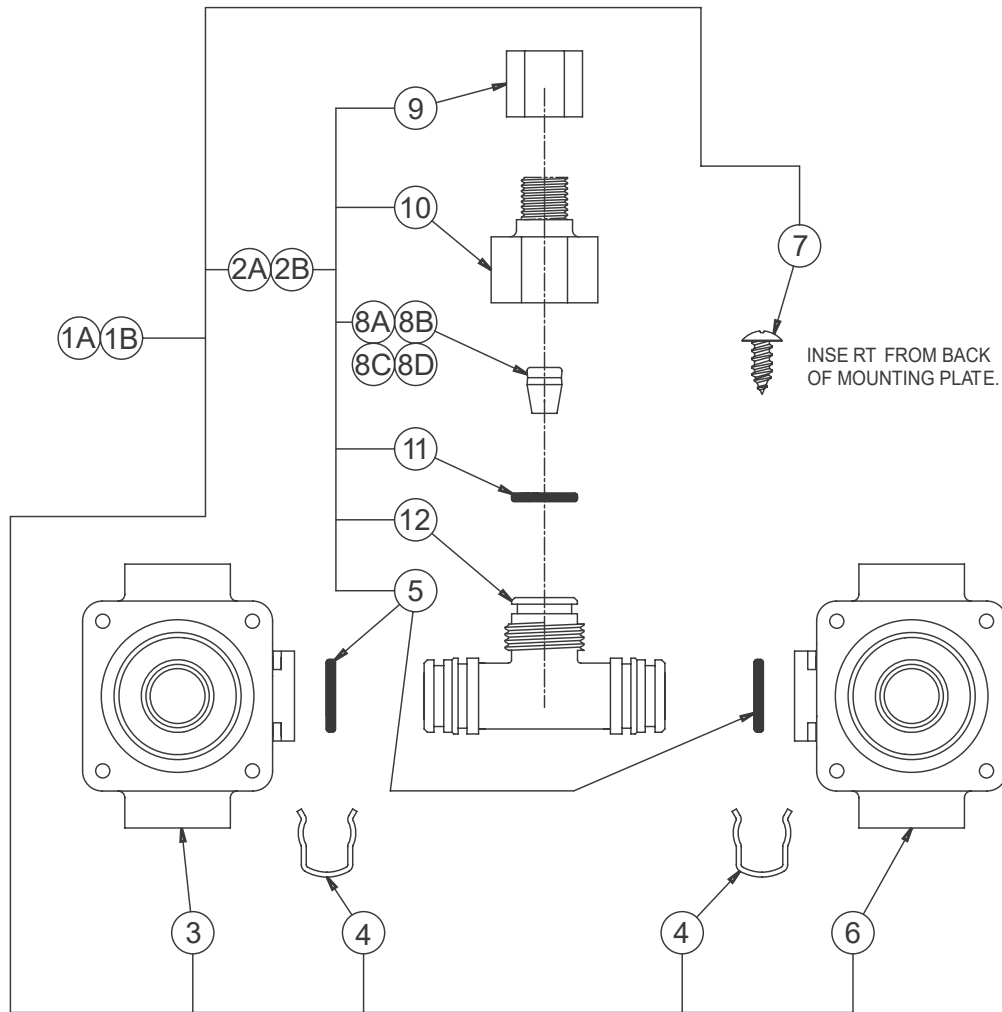


1A	2590-202-001	S/T VALVE BODY .5 GPM -LAVY
1B	2590-203-001	S/T VALVE BODY 2.5 GPM -SHOWER
2A	2570-045-001	SINGLE TEMP TEE ASSY .5 GPM -LAVY
2B	2570-046-001	SINGLE TEMP TEE ASSY 2.5 GPM -SHOWER
3	2570-027-000	LH VALVE BODY
4	0326-100-000	RETAINING CLIP
5	0124-010-000	#10-32 x 1/2" STN STL SCREW
6	1895-451-000	1/4" FERRULE NUT
7	2570-042-000	FLOW CONTROL ADAPTER
8A	0469-005-000	FLOW CONTROL .5 GPM -LAVY
8B	0469-025-000	FLOW CONTROL 2.5 GPM -SHOWER
8C	0469-022-000	FLOW CONTROL 2.2 GPM -SHOWER
8D	0469-007-000	FLOW CONTROL .7 GPM -DRINKING FOUNTAIN
9	0401-014-000	O-RING
10	2570-045-000	SINGLE TEMP TEE BODY
11	0401-015-000	O-RING
ITE	ART NUMBER	DESCRIPTION



# HOT & COLD AIR-CONTROL VALVE BODY ASSEMBLY (-4)

9955-005-003



INSE RT FROM BACK  
OF MOUNTING PLATE.

1A	2590-200-001	H & C VALVE BODY, .5GPM - LAVY	8A	0469-005-000	FLOW CONTROL .5GPM - LAVY
1B	2590-201-001	H & C VALVE BODY, 2.5GPM - SHOWER	8B	0469-025-000	FLOW CONTROL 2.5GPM - SHOWER
2A	2570-040-001	H & C MIXING TEE ASSY, .5GPM - LAVY	8C	0469-022-000	FLOW CONTROL 2.2GPM - SHOWER
2B	2570-043-001	H & C MIXING TEE ASSY, 2.5GPM - SHWR	8D	0469-007-000	FLOW CONTROL .7GPM - DRINKING FOUN
3	2570-027-000	LEFT HAND VALVE BODY	9	1895-451-000	1/4" FERRULE NUT
4	0326-100-000	RETAINING CLIP	10	2570-042-000	FLOW CONTROL ADAPTER
5	0401-015-000	O-RING	11	0401-014-000	O-RING
6	2570-026-000	RIGHT HAND VALVE BODY	12	2570-041-000	MIXING TEE BODY
7	0124-010-000	#10-32 x 1/2" SS PHILLIPS HEAD SCREW			
ITEM	PART NUMBER	DESCRIPTION	ITEM	PART NUMBER	DESCRIPTION