



a Geberit company

2100 South Clearwater Drive
Des Plaines, IL 60018
Phone: 847-803-5000
Fax: 847-803-5454
www.chicagofaucets.com

REPAIR PARTS

BY: JAR DATE: 10-30-07

CHK: *JAR* REV: 10-30-14

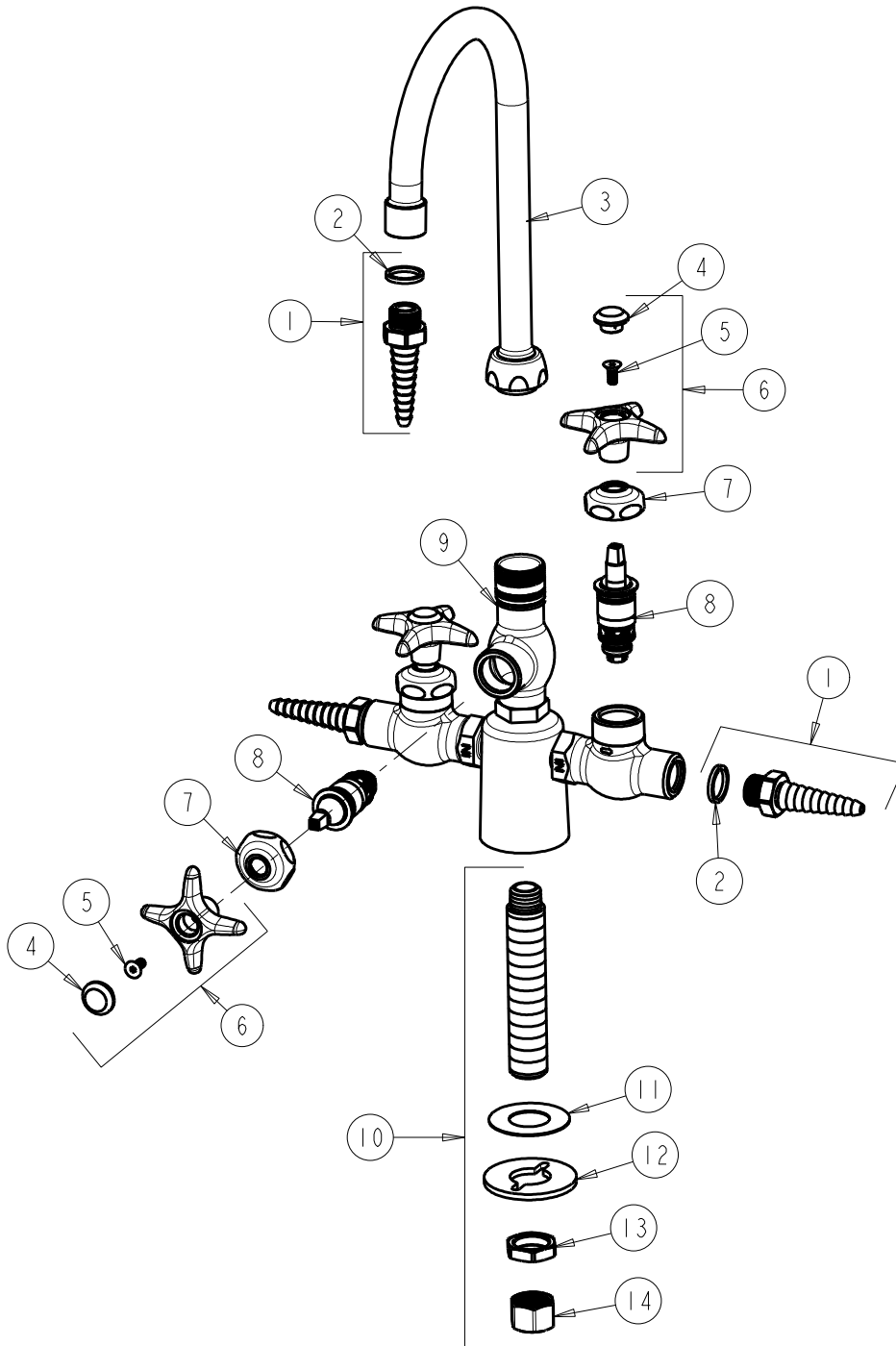
FITTING NO.

997-CP

SUBMITTED MODEL NO.

ITEM NO.

FOR TECHNICAL ASSISTANCE
1-800-TEC-TRUE (1-800-832-8783)



ITEM	PART NO.	DESCRIPTION	ITEM	PART NO.	DESCRIPTION
1	E7JKCP	SERRATED HOSE NOZZLE	9	-----	VALVE (NOT SOLD SEPARATELY)
2	229-003JKABNF	WASHER	10	748-003JKABRBF	MALE THREAD SHANK ASSY
3	GN2BJKABCP	SPOUT	11	333-103JKNF	RUBBER WASHER
4	216-178JKNF	BUTTON 'CW'	12	807-112JKNF	WASHER
5	420-020JKNF	SCREW, 1/8 FLAT HEX HEAD X 1/2	13	49-004JKRBF	LOCKNUT
6	204-CWJKCP	HANDLE ASSEMBLY	14	49-005JKRBF	COUPLING NUT
7	1-214JKCP	CAP			
8	217-XTLHJKABNF	CARTRIDGE, SLO-COMPRESSION (LH)			