

**CHICAGO FAUCETS**  
a Geberit company

2100 South Clearwater Drive  
Des Plaines, IL 60018  
Phone: 847-803-5000  
Fax: 847-803-5454  
www.chicagofaucets.com

**REPAIR PARTS**

FITTING NO.

**986-WSV937CHAGVSAM**

SUBMITTED MODEL NO.

BY: JAR

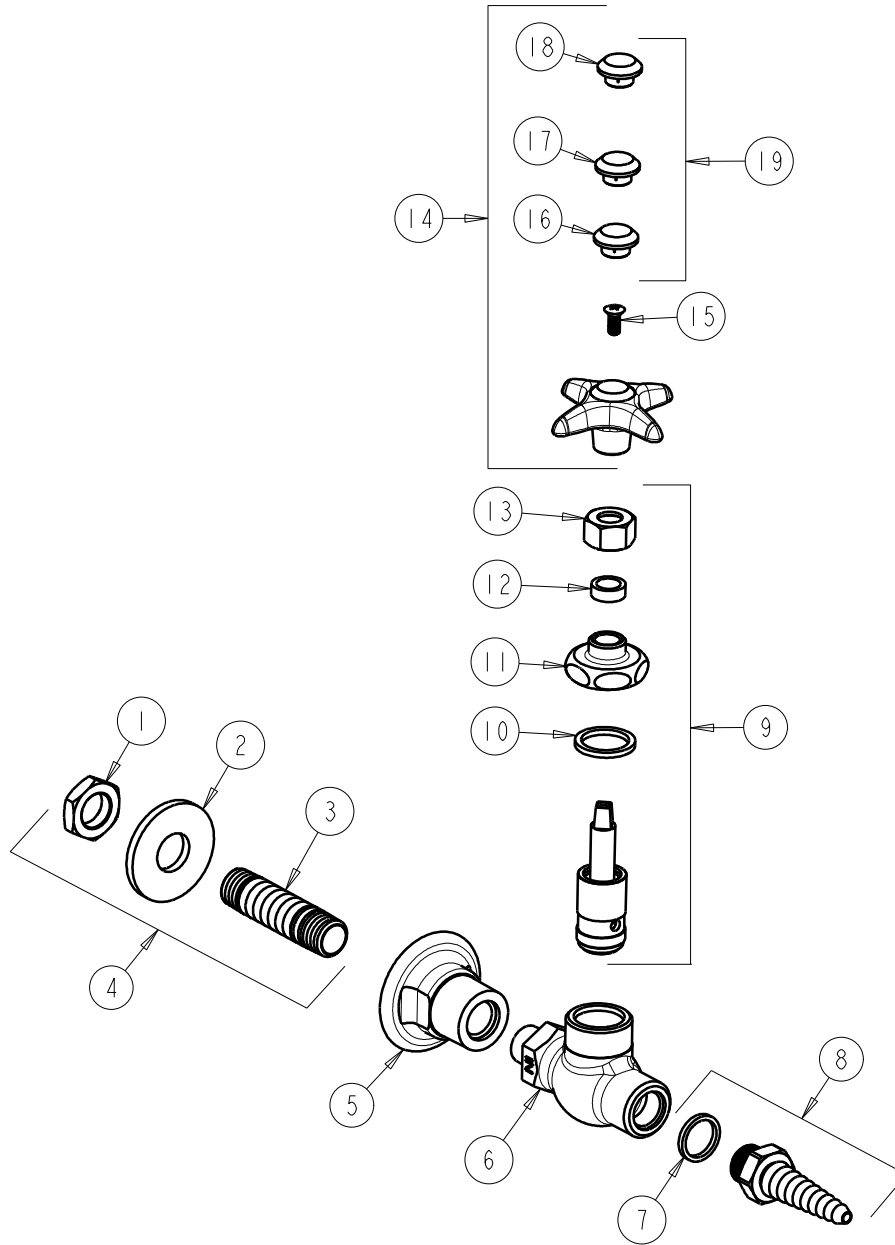
DATE: 09-17-09

CHK:

REV:

ITEM NO.

**FOR TECHNICAL ASSISTANCE**  
1-800-TEC-TRUE (1-800-832-8783)



ITEM	PART NO.	DESCRIPTION	ITEM	PART NO.	DESCRIPTION
1	705-008JKRBF	NUT	11	937-018JKSAM	CAP NUT
2	705-010JKNF	STEEL WASHER	12	244-217JKNF	PACKING
3	---	MALE SHANK 2-5/8 X 3/8	13	937-010JKSAM	NUT
4	979-001KJKRBF	SHANK ASSEMBLY 2-5/8 X 3/8 NPT	14	204-AGVJKSAM	HANDLE ASSEMBLY (AGV)
5	---	WALL FLANGE	15	420-010JKRCF	SCREW, 10-32 UNC PH 1/2
6	---	BODY (NOT SOLD SEPARATLY)	16	216-278JKNF	BUTTON 'AIR'
7	229-003JKNF	WASHER	17	216-328JKNF	BUTTON 'GAS'
8	---	SERRATED HOSE NOZZLE	18	216-378JKNF	BUTTON 'VAC'
9	962-XJKSAM	NEEDLE VALVE UNIT	19	216-PPJKNF	PRE-PACK (AIR, GAS, VAC)
10	1-043JKNF	GASKET, CAP 1 X .80 X .09			