

CHICAGO FAUCETS
a Geberit company

2100 South Clearwater Drive
Des Plaines, IL 60018
Phone: 847-803-5000
Fax: 847-803-5454
www.chicagofaucets.com

REPAIR PARTS

FITTING NO.

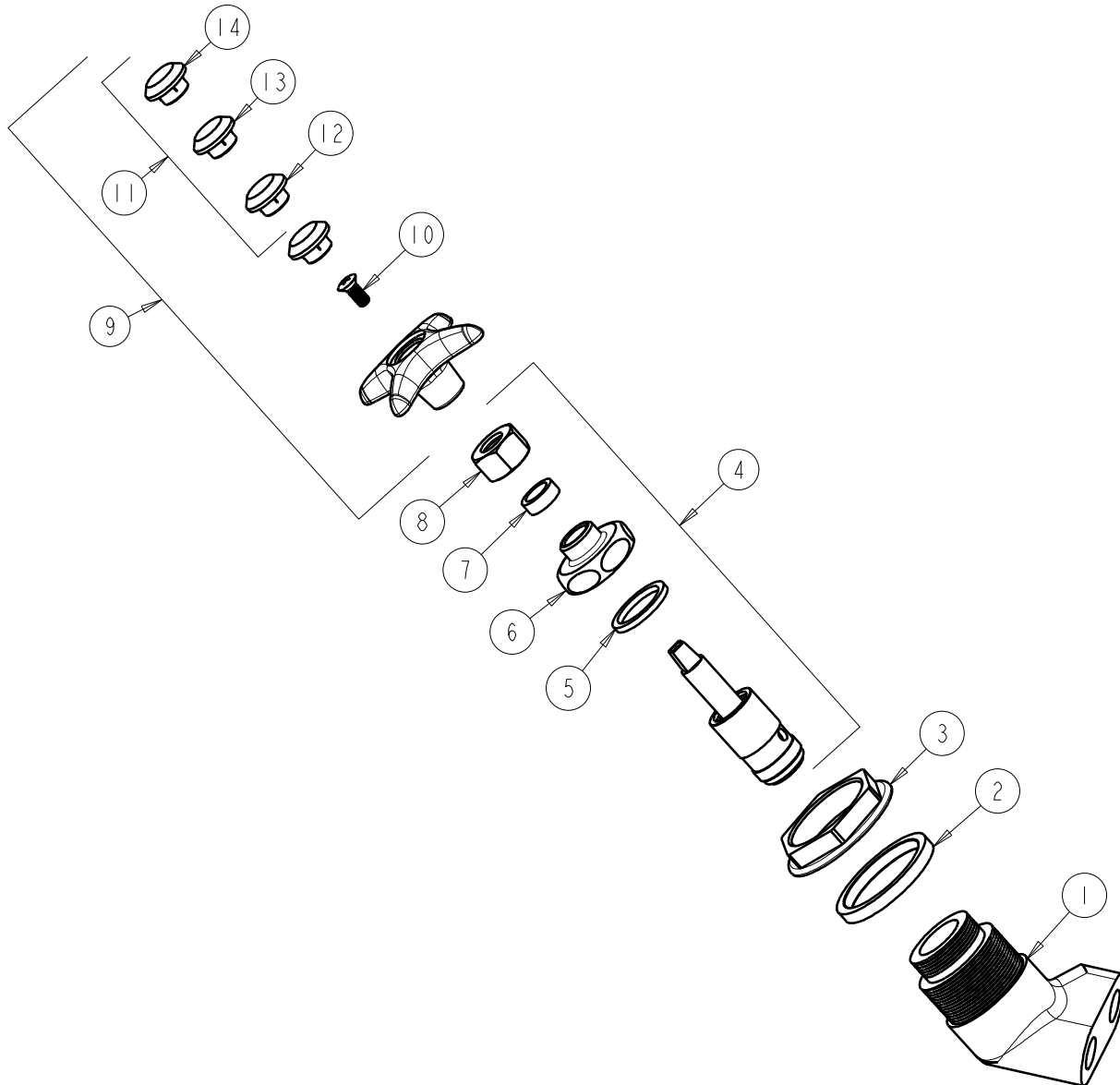
913-LHAGVSAM

SUBMITTED MODEL NO.

ITEM NO.

FOR TECHNICAL ASSISTANCE
1-800-TEC-TRUE (1-800-832-8783)

BY: JAR DATE: 09-11-09
CHK: *[Signature]* REV:



ITEM	PART NO.	DESCRIPTION
1	----	VALVE BODY (NOT SOLD SEPARATELY)
2	----	SHOULDER WASHER
3	913-002JKSAM	HOLD DOWN NUT
4	962-XJKSAM	NEEDLE VALVE UNIT
5	1-043JKNF	GASKET, CAP 1 X .80 X .09
6	937-018JKSAM	CAP NUT
7	244-217JKNF	PACKING
8	937-010JKSAM	NUT
9	204-AGVJKSAM	HANDLE ASSEMBLY (AGV)
10	420-010JKRCF	SCREW, 10-32 UNC PH 1/2
11	216-PPJKNF	PRE-PACK (AIR, GAS, VAC)
12	216-278JKNF	BUTTON 'AIR'
13	216-328JKNF	BUTTON 'GAS'
14	216-378JKNF	BUTTON 'VAC'