

**CHICAGO FAUCETS**  
a Geberit company

2100 South Clearwater Drive  
Des Plaines, IL 60018  
Phone: 847-803-5000  
Fax: 847-803-5454  
www.chicagofaucets.com

**REPAIR PARTS**

BY: SID DATE: 03-31-11  
CHK: *AK* REV: 10-20-17

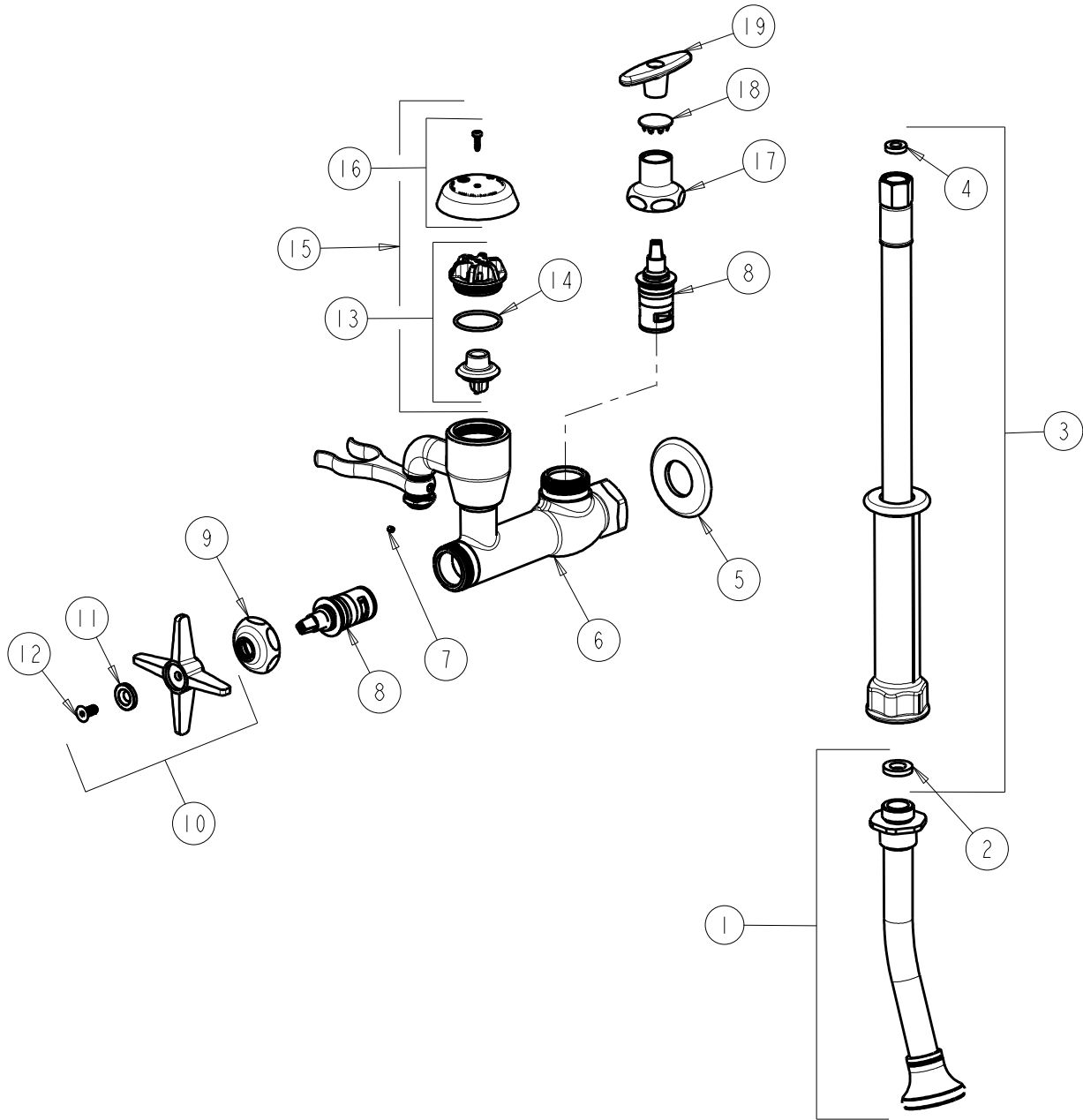
FITTING NO.

**809-XKCP**

SUBMITTED MODEL NO.

ITEM NO.

**FOR TECHNICAL ASSISTANCE**  
1-800-TEC-TRUE (1-800-832-8783)



| ITEM | PART NO.       | DESCRIPTION                      | ITEM | PART NO.       | DESCRIPTION                      |
|------|----------------|----------------------------------|------|----------------|----------------------------------|
| 1    | 777-019JKKCP   | SPRAY, ANGLED NOZZLE W/ WASHER   | 11   | 633-123JKNF    | INDEX BUTTON (BLUE)              |
| 2    | 919-243JKABNF  | GASKET, .685 X .375 X .125       | 12   | 420-020JKNF    | SCREW, 1/8 FLAT HEX HEAD X 1/2   |
| 3    | 739-053KJKABNF | HOSE, WHITE VINYL 53" W/ WASHERS | 13   | 892-302KJKABNF | VACUUM BREAKER REPAIR KIT        |
| 4    | 739-051JKABNF  | GASKET, 1/2 X 1/4 X 1/8          | 14   | 80-007JKABNF   | O RING 0.989 X .070              |
| 5    | 417-019JKCP    | FLANGE, 1.94 X .88 X .11         | 15   | 892-402KJKABNF | KIT, VACUUM BREAKER ASSEMBLY     |
| 6    | -----          | BODY (NOT SOLD SEPARATELY)       | 16   | 892-254JKKCP   | VACUUM BREAKER COVER w/ SCREW    |
| 7    | 777-013JKNF    | SCREW, SET 6-32 X 1/8            | 17   | 1-246JKCP      | NUT, CAP LOOSE KEY 1-1/8-18 UNEF |
| 8    | 1-100XKJKABNF  | LH CERAMIC CARTRIDGE 1/4         | 18   | 1-144JKCP      | BUTTON                           |
| 9    | 1-214JKCP      | CAP                              | 19   | 293-006JKRCF   | TEE HANDLE (INCLUDES SCREW)      |
| 10   | 633-COLDJKCP   | 4-ARM CROSS HANDLE ASSEMBLY      |      |                |                                  |