



a Geberit company

2100 South Clearwater Drive  
Des Plaines, IL 60018  
Phone: 847-803-5000  
Fax: 847-803-5454  
www.chicagofaucets.com

# REPAIR PARTS

BY: SID DATE: 10-03-00

CHK: *[Signature]* REV: 11-13-14

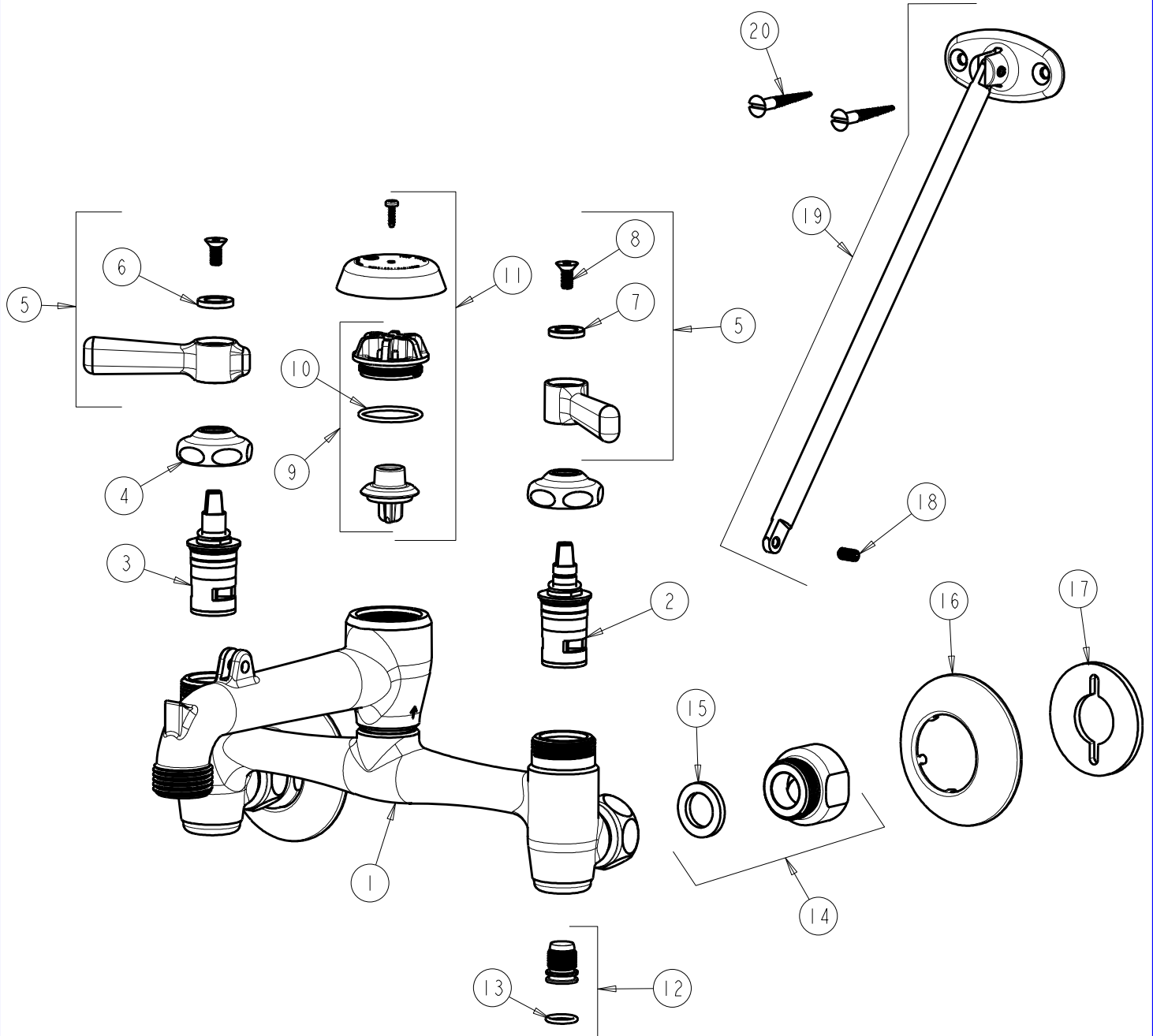
FITTING NO.

**897-CP**

SUBMITTED MODEL NO.

ITEM NO.

**FOR TECHNICAL ASSISTANCE**  
1-800-TEC-TRUE (1-800-832-8783)



ITEM	PART NO.	DESCRIPTION	ITEM	PART NO.	DESCRIPTION
1	-----	VALVE BODY (NOT SOLD SEPERATELY)	11	892-402KJKABNF	KIT, VACUUM BREAKER ASSEMBLY
2	1-099XKJKABNF	RH CERAMIC CARTRIDGE 1/4	12	897-014KJKRBF	INTEGRAL STOP STEM ASSEMBLY
3	1-100XKJKABNF	LH CERAMIC CARTRIDGE 1/4	13	1104-007JKABNF	O RING
4	1-214JKCP	CAP	14	897-012JKRCF	ARM ASSEMBLY (INCLUDES WASHER)
5	369-PRJKCP	HANDLE, 2-3/8 LEVER (PAIR)	15	1-011JKABNF	WASHER, .97 X .62 X .12
6	633-023JKNF	INDEX BUTTON (RED)	16	633-201JKCP	WALL FLANGE
7	633-123JKNF	INDEX BUTTON (BLUE)	17	807-112JKNF	WASHER
8	420-020JKNF	SCREW, 1/8 FLAT HEX HEAD X 1/2	18	665-116JKNF	SET SCREW
9	892-302KJKABNF	VACUUM BREAKER REPAIR KIT	19	897-013KJKCP	BRACE ROD ASSEMBLY
10	80-007JKABNF	O RING 0.989 X .070	20	173-006JKCP	FLAT HEAD WOOD SCREW