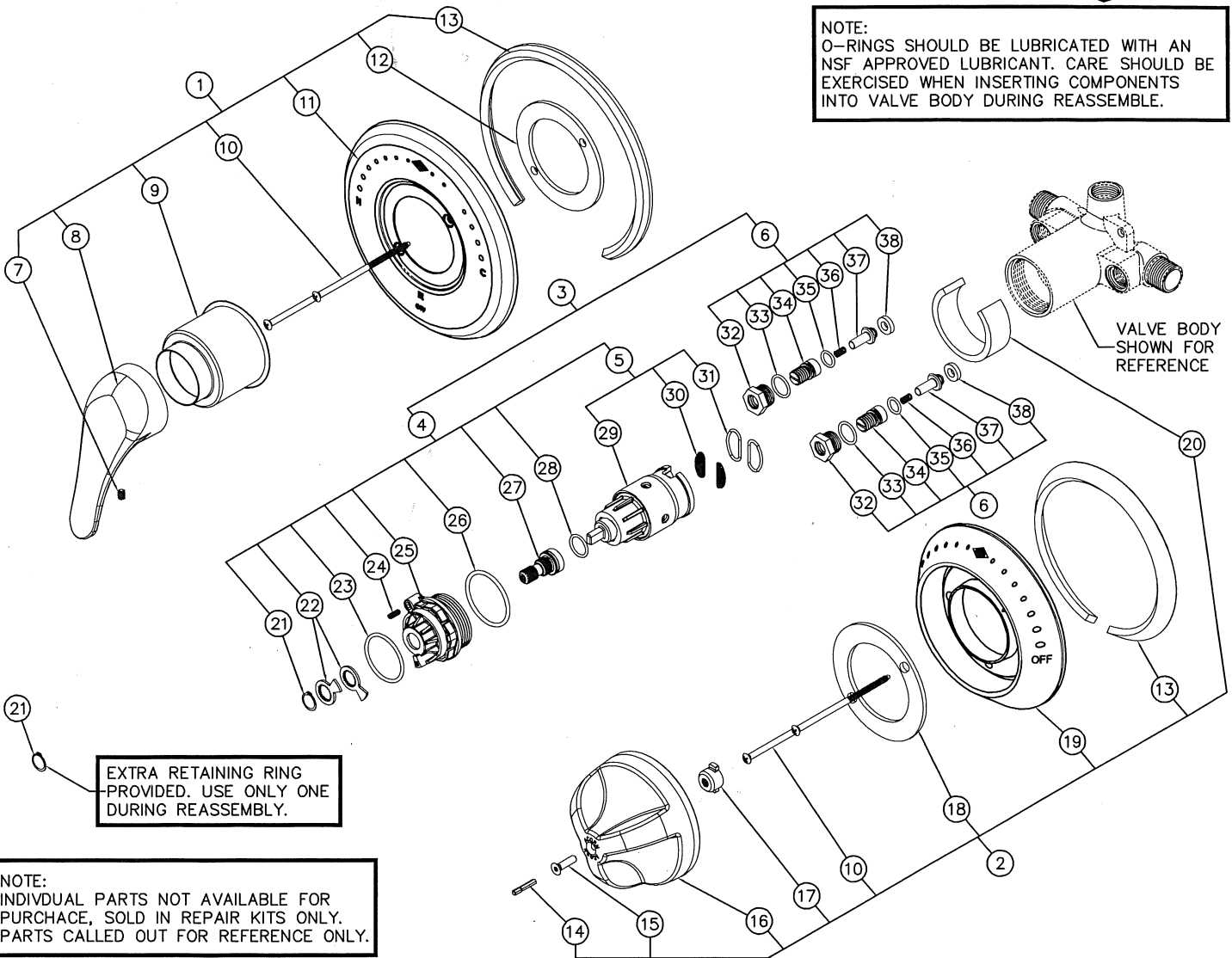




NOTE:
O-RINGS SHOULD BE LUBRICATED WITH AN NSF APPROVED LUBRICANT. CARE SHOULD BE EXERCISED WHEN INSERTING COMPONENTS INTO VALVE BODY DURING REASSEMBLY.



NOTE:
INDIVIDUAL PARTS NOT AVAILABLE FOR PURCHASE, SOLD IN REPAIR KITS ONLY. PARTS CALLED OUT FOR REFERENCE ONLY.

ITEM	KIT NUMBER	DESCRIPTION	ITEM	KIT NUMBER	DESCRIPTION
1	7800-506-001	TRIM REPLACEMENT, LEVER HANDLE	4	7800-502-001	CARTRIDGE & BONNET REPLACEMENT
2	7800-186-001	TRIM REPLACEMENT, LIGATURE RESIS	5	7800-501-001	CARTRIDGE REPLACEMENT
3	7800-500-001	COMPLETE REBUILD KIT	6	7800-504-001	CHECK-STOP REBUILD KIT

ITEM	DESCRIPTION	ITEM	DESCRIPTION	ITEM	DESCRIPTION
7	CUP POINT SET SCREW	18	HANDLE GASKET	29	CARTRIDGE
8	LEVER HANDLE	19	LIGATURE RESIS ESCUTCHEON	30	STAINLESS STEEL SCREENS (x2)
9	VALVE SLEEVE	20	SLEEVE GASKET (SV16 ONLY)	31	CART SCREEN O-RINGS (x2)
10	OVAL HEAD SCREWS (x2)	21	RETAINING RING (x2)	32	CHECK CAP (x2)
11	ESCUTCHEON, LEVER HANDLE	22	TEMPERATURE STOP RINGS (x2)	33	CHECK CAP O-RING (x2)
12	TRIM PLATE CENTER GASKET	23	EXTERNAL BONNET O-RING	34	CHECK ADJUST SCREW (x2)
13	ESCUTCHEON GASKET	24	SET SCREW	35	CHECK ADJ SCREW O-RING (x2)
14	5/32" SHANK CENTER REJECT BIT	25	VALVE BONNET	36	CHECK SPRING (x2)
15	LIGATURE RESIS HANDLE SCREW	26	BONNET O-RING	37	CHECK PLUNGER (x2)
16	LIGATURE RESISTANT HANDLE	27	VALVE STEM	38	CHECK SEAL (x2)
17	STEM INSERT	28	VALVE STEM O-RING		

ACORN ENGINEERING COMPANY
P.O. BOX 3527 INDUSTRY, CA. 91744
(626) 336-4561 FAX (626) 961-2200

T/P TEMP-PRESURE BALANCING MIXING VALVE CARTRIDGE / CHECKSTOPS		
MANUFACTURE DATE	DATE ISSUED	DRAWING NUMBER
JUNE 2014	06/01/14	
TO PRESENT	DATE REVISED	9975-005-002
	12/01/14 B	